

**WEST MICHIGAN SHORELINE  
MATERIALS MANAGEMENT PLANNING  
COMMITTEE**

**KICK-OFF MEETING**

**DECEMBER 2, 2024**

# From Solid Waste Planning to Materials Management Planning

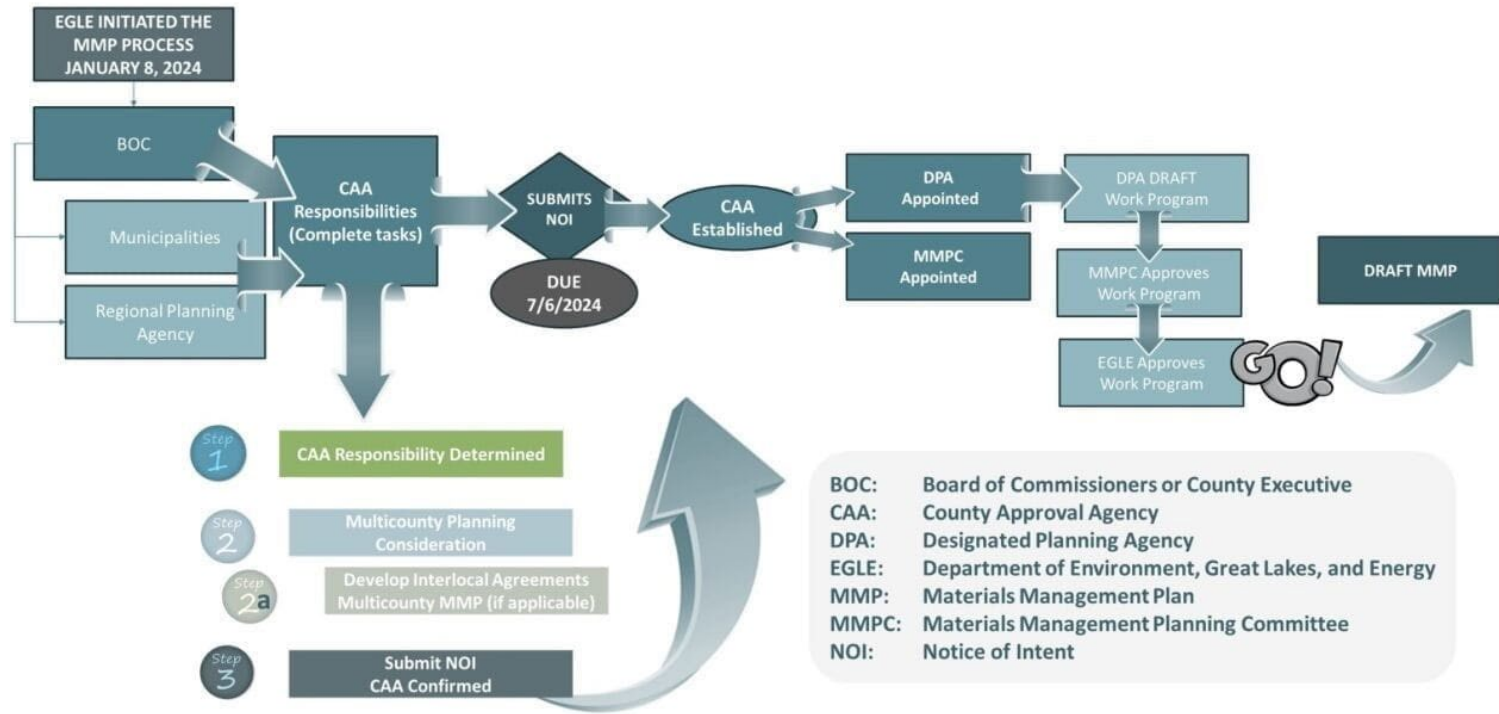
- Solid Waste Plans required in 1990's
- Updated PA 115 became effective March 29, 2023.
- MMP process initiated by EGLE Director January 8, 2024



Focusing on sustainable materials management approaches, such as recycling and composting, instead of primarily disposal.

# MMMP Overview

- Each County is required to develop a single or multicounty MMP.
- MMPs will establish goals with measurable objectives to divert recyclables and organics from disposal, while also increasing recycling access and education.
- Counties will have 3 years to complete the planning process, including the MMP development and local approvals.
- Funding will be available annually for MMP development, implementation, and maintenance. (\$60,000 plus \$0.50 per capita for 3 years)
- Additional funding will be available for counties that participate in multicounty planning. (\$10,000)
- MMPs replace existing solid waste management plans, once approved.



# MMMP PLANNING PROCESS

**MMP Work Plan: January 27, 2025**

**Approved MMP: July 3, 2027**

### **County Approval Agency**

- Serves as the primary responsible party.
- Responsible for MMP implementation.
- Consults with adjacent counties regarding interest in preparing a multicounty MMP.
- Appoints the DPA.
- Appoints an MMPC.
- Oversees the creation and implementation of the DPA's work program.
- Utilizes the MMP Grant funds for MMP development and implementation.
- Approves the MMP prior to municipal approval.
- Approves MMP modifications, if needed.
- Certifies to the Department the progress toward meeting all components of its materials management goals

### **Designated Planning Agency**

- Serves as the primary government resource in the planning area for information about the MMP and the MMP development process.
- Prepares the MMP work program.
- Prepares the MMP.
- Consults with all affiliated entities.
- Publishes required public notices.
- Obtains written approvals from the Planning Committee, CAA, and municipalities.
- Manages the public comment process.
- Drafts language for review and approval of the Planning Committee.
- Ensures approval process and submittals comply with Part 115.

### **MMP Committee**

- Directs the DPA in the preparation of the MMP.
- Reviews and approves the DPA work program.
- Identifies relevant local policies and priorities.
- Ensures coordination in the preparation of the MMP.
- Advises county (or counties if multi-county) and municipalities.
- Ensures that the DPA is fulfilling all the requirements and rules promulgated under this part, as to both the content of the MMP and the public participation requirement.
- Notifies the applicable parties of any identified deficiencies.
- Approves the MMP prior to public comment.
- Provides the final level of approval of the MMP before it is presented for CAA approval.

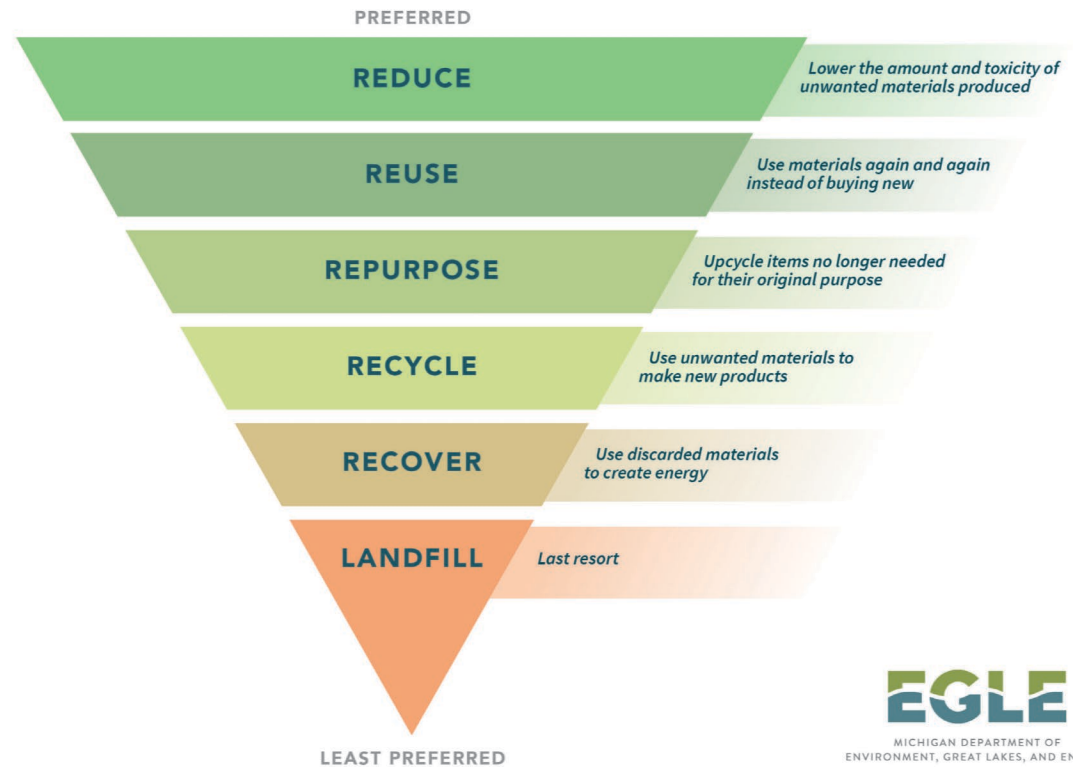
# **Entities involved in MMP Activities**

# MMP COMMUNICATION

- WMSRDC.ORG
- Meeting Notification
- Constant Contact

[wshoreline@wmsrdc.ccsend.com](mailto:wshoreline@wmsrdc.ccsend.com)

## SUSTAINABLE MATERIALS MANAGEMENT



**EGLE**

MICHIGAN DEPARTMENT OF  
ENVIRONMENT, GREAT LAKES, AND ENERGY

Michigan.gov/EGLE | 800-662-9278

# EGLE Plan Format Section Outline

MMP Cover Page

Planning Area  
Profile

Materials  
Management Goals

Mechanisms

Administration

Appendices

# State-wide Support, Resources, and Coordination

- Michigan Association of Regions
- Michigan Recycling Coalition
- Surrounding Counties
- EGLE





**THANK YOU**

**Erin Kuhn**

231-722-7878 ext. 180

ekuhn@wmsrdc.org

**Stephen Carlson**

231-722-7878 ext. 110

scarlson@wmsrdc.org