

FACT SHEET

West Michigan Shoreline Materials Management Planning



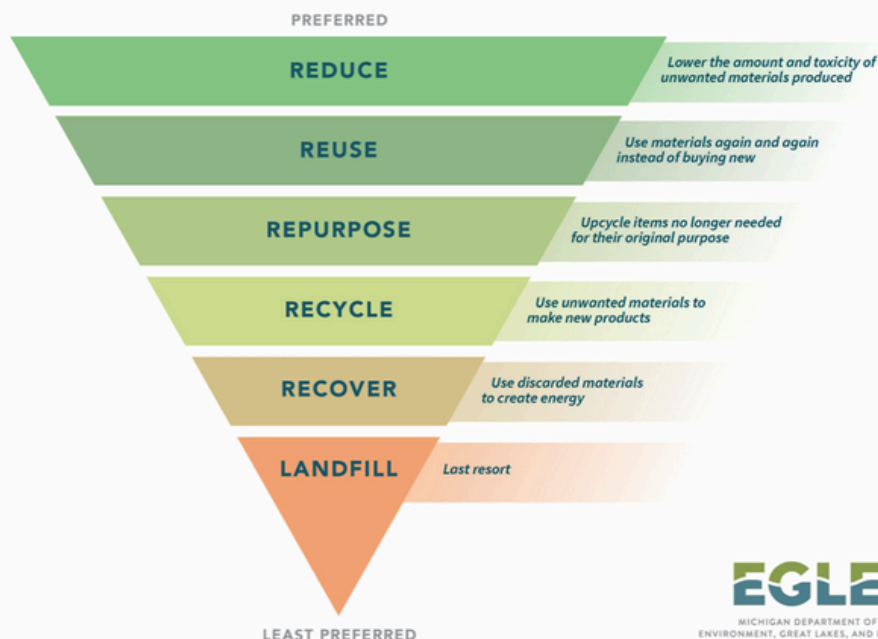
MMP Overview

- Michigan is moving from solid waste planning to materials management planning focusing on sustainable materials management approaches, such as recycling and composting, instead of primary disposal.
- Each county is required to develop a single or multicounty Materials Management Plan (MMP) following updates to PA 115 by the Michigan legislature.
- MMPs will establish goals with measurable objectives to divert recyclables and organics from disposal, while also increasing recycling access and education.
- Counties will have three (3) years to complete the planning process, including the MMP development and local approvals.
- MMPs replace existing solid waste management plans, once approved.

**For additional
information and
resources
regarding the
MMP visit:**

**WMSRDC.org
or
Michigan.gov/EGLE**

SUSTAINABLE MATERIALS MANAGEMENT



MICHIGAN DEPARTMENT OF
ENVIRONMENT, GREAT LAKES, AND ENERGY

Michigan.gov/EGLE | 800-662-9278

FACT SHEET

West Michigan Shoreline Materials Management Planning



West Michigan Shoreline MMP Timeline

- EGLE initiated the planning process in January 2024.
- The counties of Lake, Mason, Muskegon, Newaygo and Oceana have agreed to prepare a five-county multicounty plan and have designated the West Michigan Shoreline Regional Development Commission (WMSRDC) as their designated planning agency.
- A 21 member Materials Management Planning Committee (MMPC) was appointed by the five (5) county boards of commissioners and began meeting in December 2024.
- The MMPC has set a regular meeting schedule (the first Monday of each month at 10:00 a.m. with locations rotating around region). All meetings are open to the public and subject to Michigan's Open Meetings Act.
- The final MMP is required to be completed by July 2027.
- Throughout the process, there will be opportunities for public input and involvement.

**For additional information and
resources regarding the MMP visit:**

WMSRDC.org
or
Michigan.gov/EGLE