

Materials Management Planning

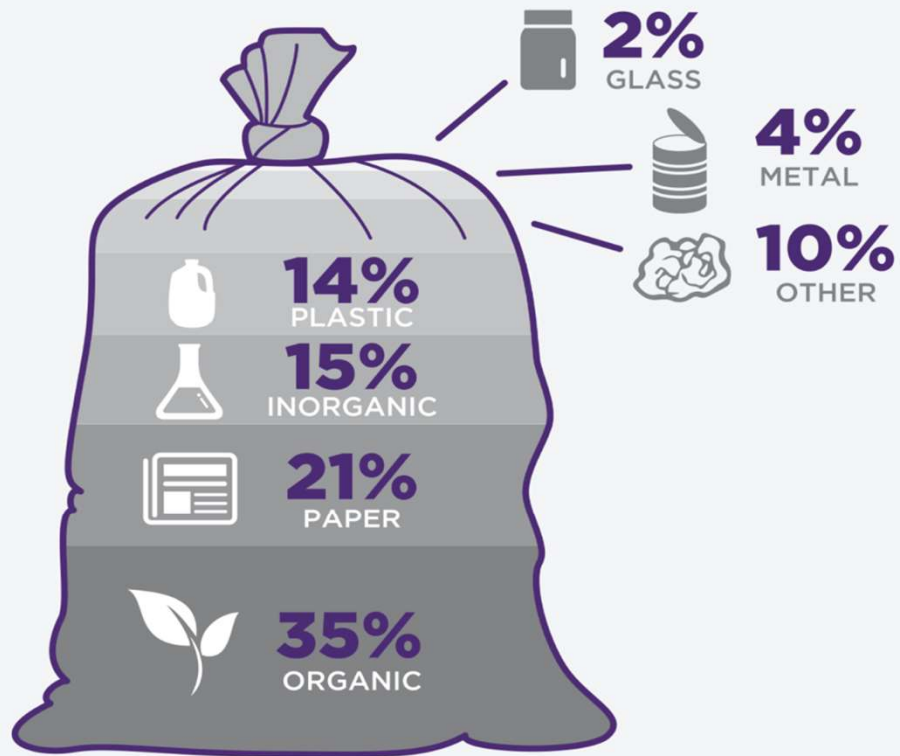
Jeff Krcmarik, EGLE Recycling Specialist

Solid Waste Legislation

Updated Materials
Management Planning
process
Increased education and
awareness of disposal
options and techniques
Provide standards for
recycling and composting
facilities
Update landfill requirements



What we throw away in West Michigan:



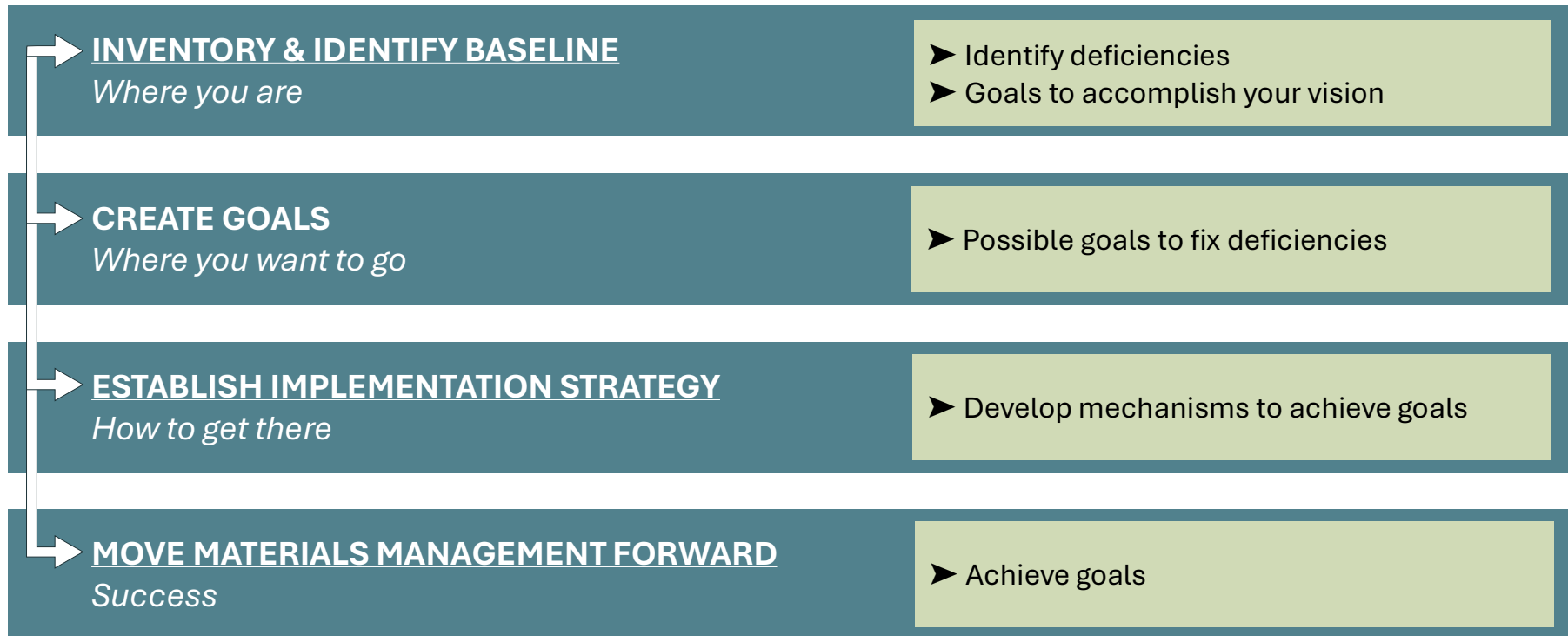
What the trash we throw away is worth:



SOURCE: Kent County, reimagetrash.org

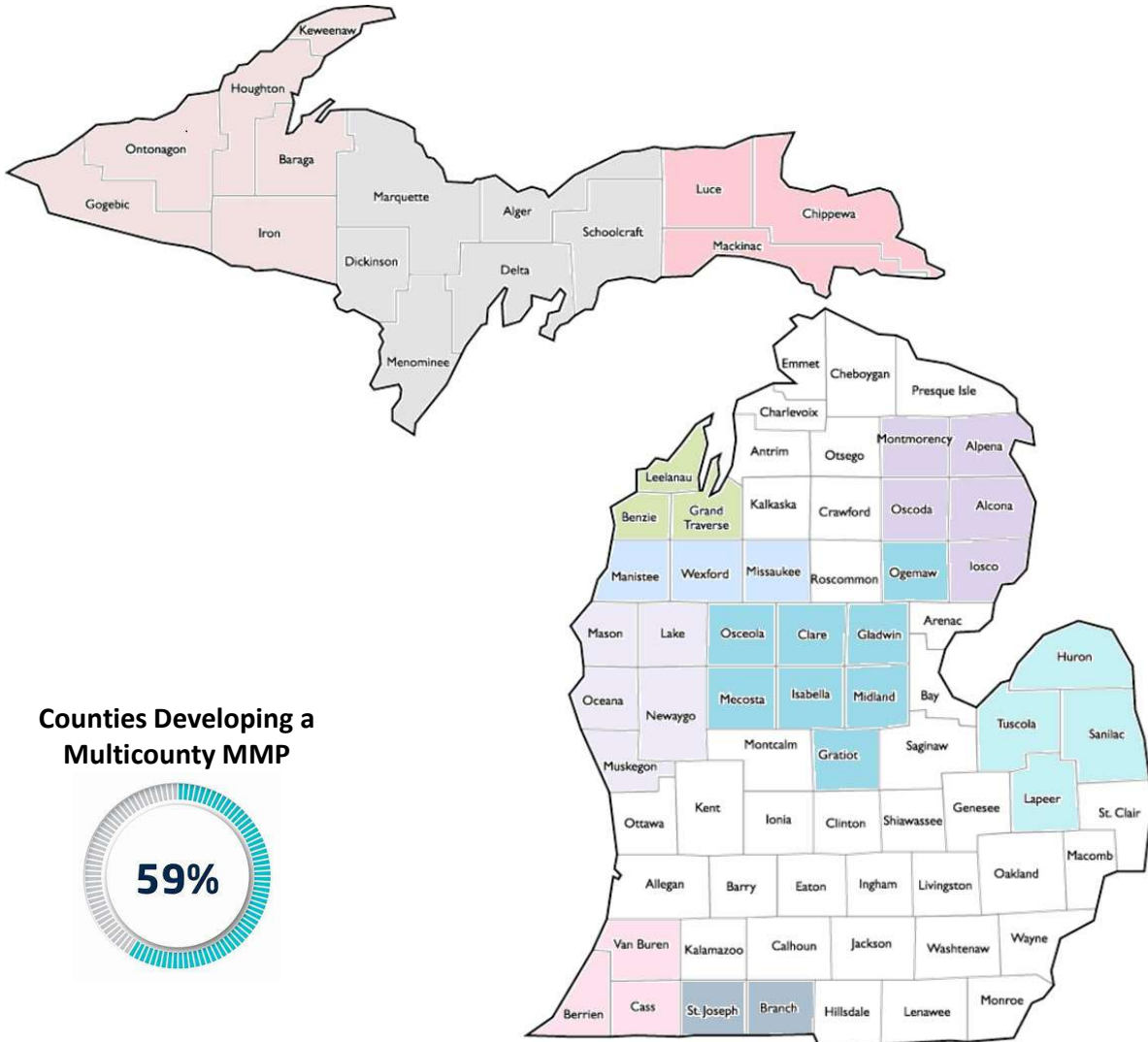
Let Us Help You
Reimagine Your Trash

Materials Management Planning Overview



MMP Development

(Based on Notice of Intent (NOI) correspondences)



Multicounty MMPs Counties

WUPPDR: Baraga, Gogebic, Houghton, Iron, Keweenaw, Ontonagon	CUPPAD: Alger, Delta, Dickinson, Marquette, Menominee, Schoolcraft
EUP: Chippewa, Luce, Mackinac	Benzie, Grand Traverse, Leelanau
Manistee, Missaukee, Wexford	WMSRDC: Lake, Mason, Muskegon, Newaygo, Oceana
Hartland: Clare, Gladwin, Gratiot, Isabella, Mecosta, Midland, Ogemaw, and Osceola.	Thumb Region: Huron, Lapeer, Sanilac, Tuscola
SWMPC: Berrien, Cass, Van Buren	Branch, St. Joseph
MOIAA: Alpena, Alcona, Iosco, Montmorency, Oscoda	

Counties in white are pursuing the MMP as a single county or have received an extension for its NOI submittal.

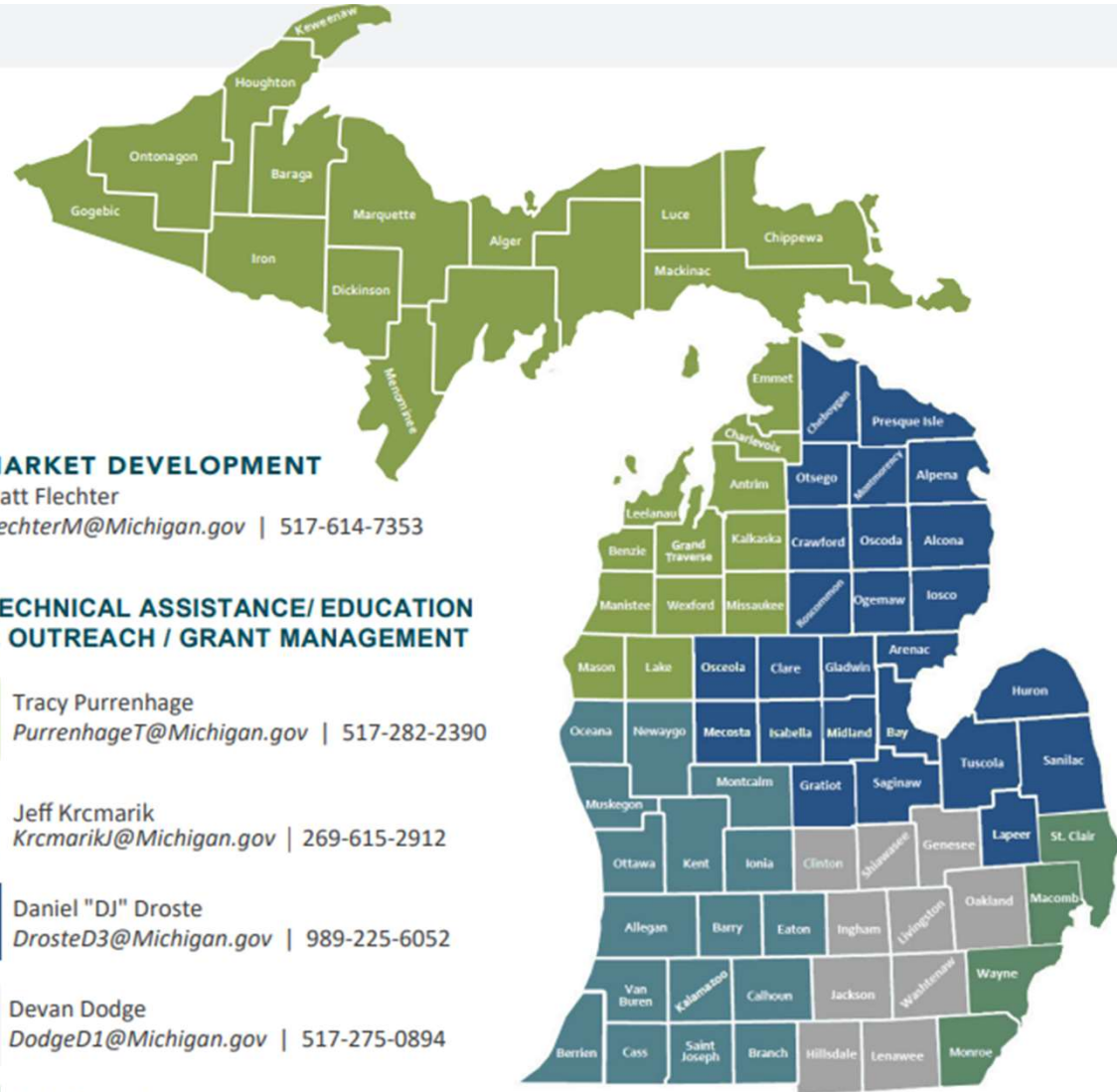
NOTE: The following counties have been accepted for a NOI extension: Clare, Gladwin, Gratiot, **Hillsdale**, Huron, Isabella, **Kalkaska**, Lapeer, Mecosta, Midland, Ogemaw, Osceola, Sanilac, Tuscola, and **Wayne**.

NOTE: Bolded counties equals single county.

CONTACT YOUR RECYCLING SPECIALIST



MICHIGAN DEPARTMENT OF
ENVIRONMENT, GREAT LAKES, AND ENERGY



MARKET DEVELOPMENT

Matt Flechter

FlechterM@Michigan.gov | 517-614-7353

TECHNICAL ASSISTANCE/ EDUCATION & OUTREACH / GRANT MANAGEMENT

Tracy Purrenhage

PurrenhageT@Michigan.gov | 517-282-2390

Jeff Krcmarik

KrcmarikJ@Michigan.gov | 269-615-2912

Daniel "DJ" Droste

DrosteD3@Michigan.gov | 989-225-6052

Devan Dodge

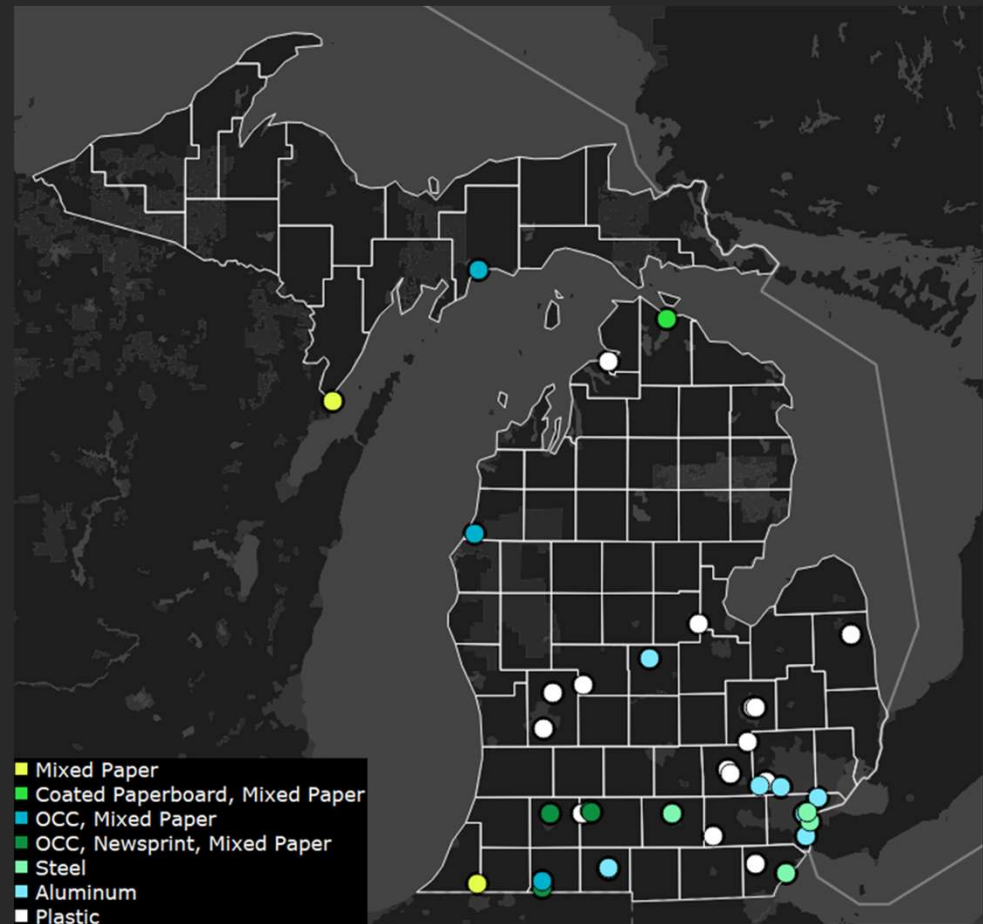
DodgeD1@Michigan.gov | 517-275-0894

Madi Opperthausen

OpperthausenM@Michigan.gov | 586-230-5273

MICHIGAN END MARKETS

*Michigan does not have
any glass cullet plants or
aluminum UBC plants*



Data Source: RRS Database

Refer to interactive map: <https://www.nextcyclemichigan.com/end-markets-base-map>

END MARKETS

Building end
market demand
is key to
reaching **45%**
recovery.

FEEDSTOCK

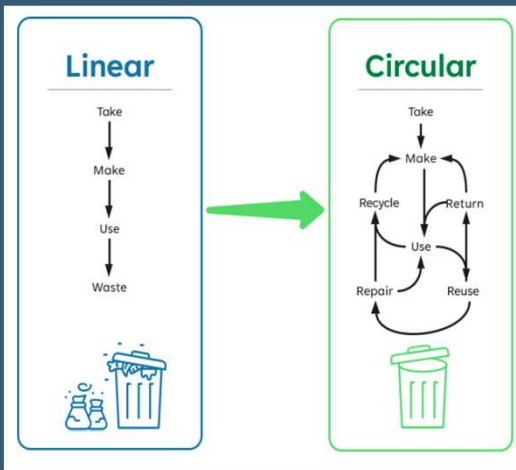


NEW PRODUCT



(TOTAL TONS MSW
RECYCLED AND
COMPOSTED,
DIVIDED BY THE
TOTAL TONS MSW
RECYCLED,
COMPOSTED,
LANDFILLED,
INCINERATED) X
100 = RECYCLING
RATE

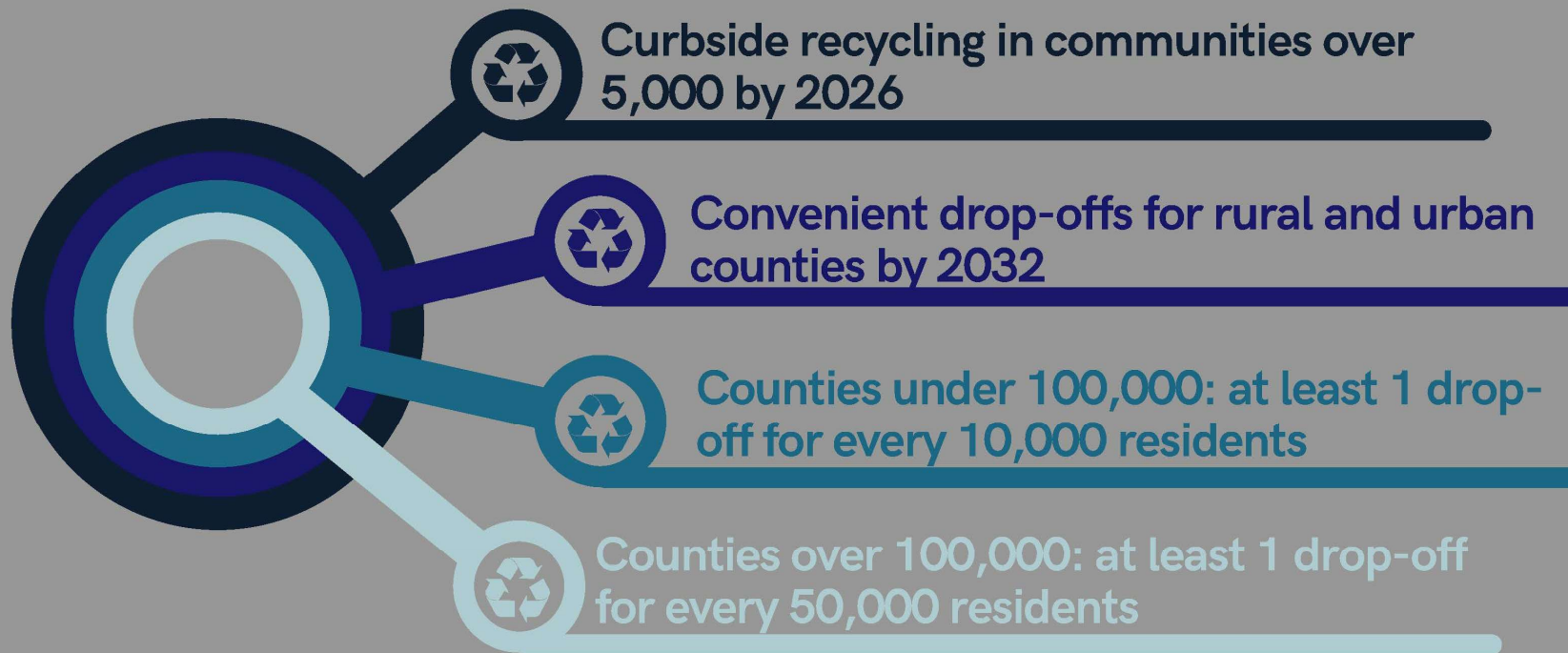
Calculating Recycling Rate



2023 Gap Analysis

[NEXTCYCLEMICHIGAN.COM/RESOURCE-LIBRARY](https://nextcyclemichigan.com/resource-library)

BENCHMARK RECYCLING STANDARDS



Organics (Food Waste) Grant



\$ for food waste related infrastructure items ("things")



Metrics = New or expanded food waste diversion programs



Reimbursement grant; Minimum 20% cash match



Open to both public and private sectors



This does **NOT** pay for Part 115 compliance



michigan.gov/egle/about/organization/materials-management/recycling

Recycling Infrastructure Grant



\$ for recycling related infrastructure items ("things").



Metrics =
Change/Expansion/Growth

Increase tons diverted
New sectors (residential, commercial)
New materials collected



Reimbursement grant; Minimum 20% cash match.



Hot Tip: Have grant ideas in mind before RFPs get released. Also, RFP only open to public sector.



This is a funding opportunity, not a funding mechanism.



michigan.gov/egle/about/organization/materials-management/recycling

Public Sector Funding Mechanisms



Small Community Education Grant Portal

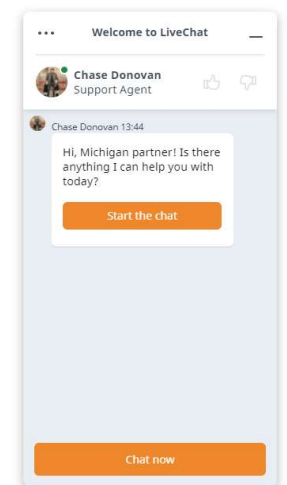


- For communities under 10,000 households (approx. 30,000 pop)
- Provide customizable collateral design/printing/ mailing
 - Info Cards
 - Top Issue Mailers
 - Info Sheets
 - Drop Off Signage
 - Cart Tags
- No upfront costs, no match
- Choose 2



Use of this Portal is subject to [The Recycling Partnership Terms & Conditions](#) and [Privacy Policy](#), in addition to [Conquest Graphics' Terms and Conditions](#).

User Notes: Limit of 2 collateral types per community, MI communities only, and limited to small communities with less than 10,000 households.



Recycling Partnership Residential Curbside Cart Grants

- Grants for cart-based curbside recycling systems
- Funding up to \$15/cart, depending on service type
- Technical assistance and design of education/outreach materials
- RFP available on an on-going basis
- Designed to align with State grants



Thank You!

Jeff Krcmarik

krcmarikj@michigan.gov

269-615-2912